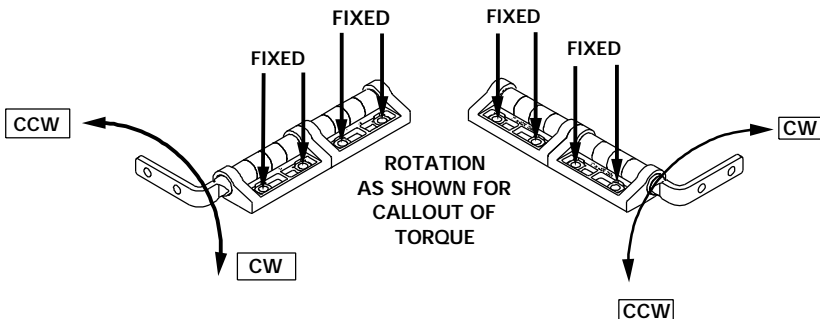


LEFT HAND

RIGHT HAND



ROTATION
AS SHOWN FOR
CALLOUT OF
TORQUE

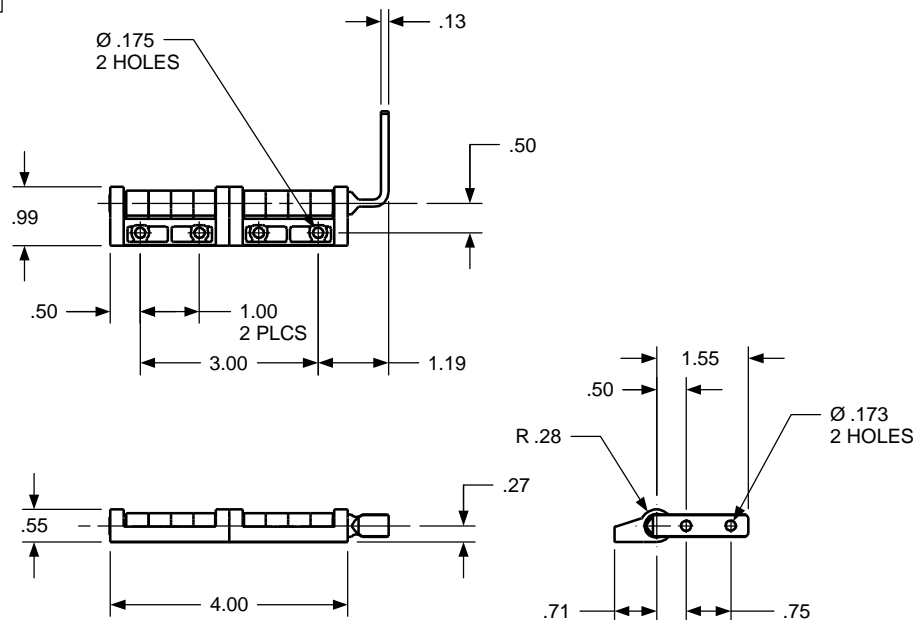
REVISION RECORD

SYM	DESCRIPTION	BY	DATE	APPD
B	REDRAWN ON NEW FORMAT, NO CHANGES.	RMF	8/30/00	DJC

TORQUE

GEOMETRY	CW TORQUE	CCW TORQUE	HAND
ZE-375-CB-201	60	60	L
ZE-375-CB-201	60	60	R
ZE-375-CB-201	X	80	L
ZE-375-CB-201	80	X	R
ZE-375-CB-201	80	X	L
ZE-375-CB-201	X	80	R

**CUSTOM TORQUE
CONFIGURATIONS AVAILABLE.
FOR QUOTE:
www.torqmaster.com
1-888-41-HINGE**



USED ON	SOLID	REV	TOLERANCES	DRAWN BY	DATE	ENGLISH		TorqMaster, Inc. Stamford, CT USA	
STANDARD	201	0.0	ENGLISH	RA	5/9/97	MATERIAL		N/A	
NEXT ASSY	NONE		.XX ±.015 in .XXX ±.005 in .XXXX ±.0002 in	CHECKED BY	DATE	TITLE			
QUANTITY				DJC	5/9/97	HINGE INTERFACE			
PER ASSY, pcs	-					SIZE	ZE 375 CB 201		REV
TOTAL, pcs	-					B			B
THIS INFORMATION IS PROPRIETARY TO TORQMASTER, INC. THE POSSESSOR AGREES TO MAINTAIN IT IN CONFIDENCE. NOT REPRODUCING OR REVEALING IT IN WHOLE OR IN PART.						SCALE	1:2	SHEET	1 OF 1