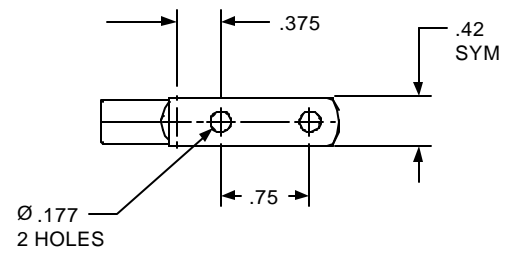
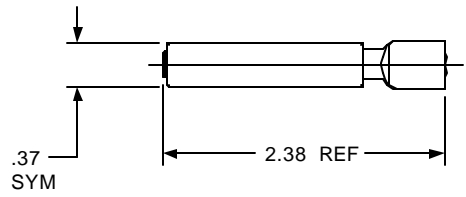
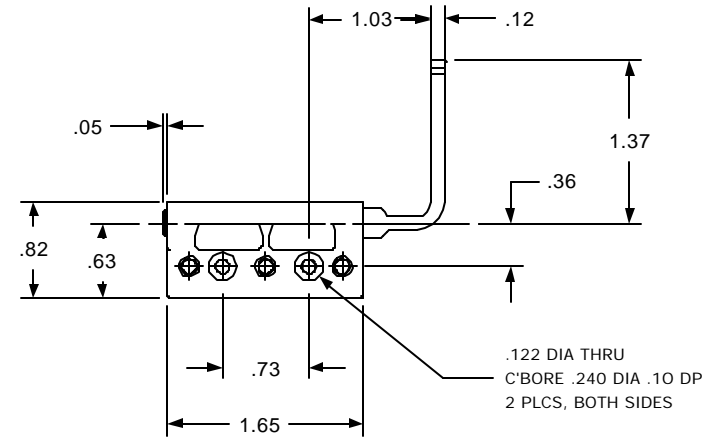
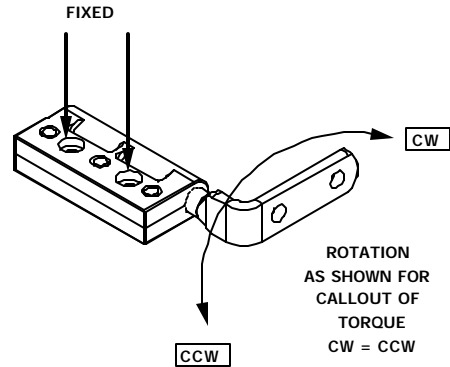


REVISION RECORD				
SYM	DESCRIPTION	BY	DATE	APPD
D	REDRAWN ON NEW FORMAT, NO CHANGES.	RMF	8/30/00	DJC



TORQUE		
GEOMETRY	CW TORQUE	CCW TORQUE
ZC-250-CB-101	7	7
ZC-250-CB-101	14	14

CUSTOM TORQUE CONFIGURATIONS AVAILABLE FOR QUOTE:
www.torqmaster.com
1-888-41-HINGE

USED ON	SOLID	REV	TOLERANCES	DRAWN BY	DATE	ENGLISH		Torg Master, Inc. Stamford, CT USA	
STANDARD	101	0.0	ENGLISH	RA	5/9/97	MATERIAL		N/A	
NEXT ASSY	NONE		.XX ±.015 in .XXX ±.005 in .XXXX ±.0002 in	CHECKED BY	DATE	TITLE			
QUANTITY				DJC	5/9/97	HINGE INTERFACE			
PER ASSY, pcs	-								
TOTAL, pcs	-								
THIS INFORMATION IS PROPRIETARY TO TORQMASTER, INC.									
THE POSSESSOR AGREES TO MAINTAIN IT IN CONFIDENCE.									
NOT REPRODUCING OR REVEALING IT IN WHOLE OR IN PART.									
SIZE		B		SCALE		1:1		SHEET 1 OF 1	
REV		D							