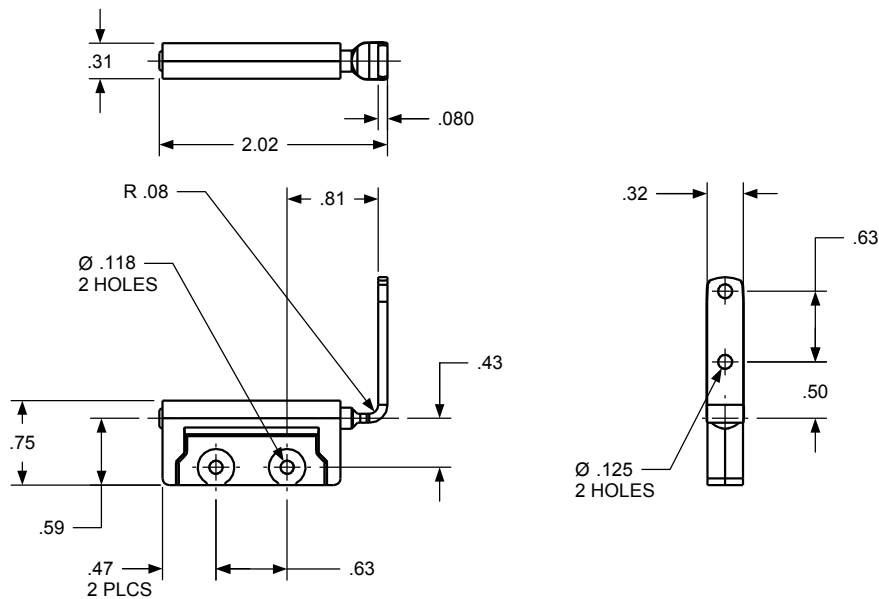
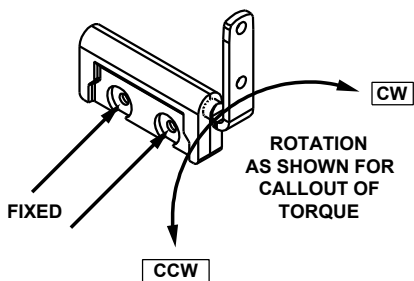


REVISION RECORD

SYM	DESCRIPTION	BY	DATE	APPD
C.1	REDRAWN ON NEW FORMAT, NO CHANGES.	RMF	8/16/00	DJC



TORQUE		
GEOMETRY	CW TORQUE	CCW TORQUE
ZC-188-CB-101		
ZC-188-CB-101		
ZC-188-CB-101		
ZC-188-CB-101		

CUSTOM TORQUE CONFIGURATIONS AVAILABLE FOR QUOTE:
 www.torqmaster.com
 1-888-41-HINGE

USED ON	SOLID	REV	TOLERANCES	DRAWN BY	DATE	ENGLISH <i>TorqMaster, Inc.</i> Stamford, CT USA	
STANDARD	101	0.0	ENGLISH	RMF	8/15/00	MATERIAL N/A	
NEXT ASSY	NONE		.XX ± .015 in .XXX ± .005 in .XXXX ± .0002 in	CHECKED BY	DATE	TITLE	
QUANTITY				DJC	8/15/00	HINGE INTERFACE	
PER ASSY, pcs	-					SIZE	REV
TOTAL, pcs	-					B	C.2
THIS INFORMATION IS PROPRIETARY TO TORQMASTER, INC. THE POSSESSOR AGREES TO MAINTAIN IT IN CONFIDENCE, NOT REPRODUCING OR REVEALING IT IN WHOLE OR IN PART.						SCALE	1:1
						SHEET	1 OF 1